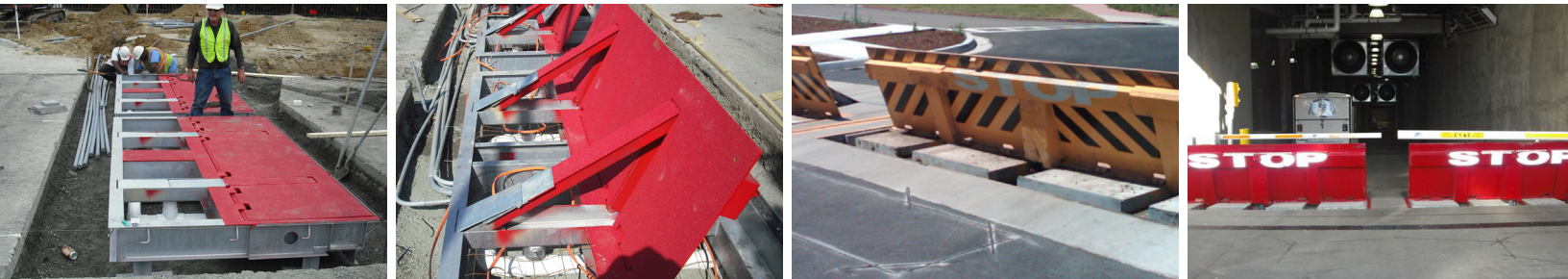


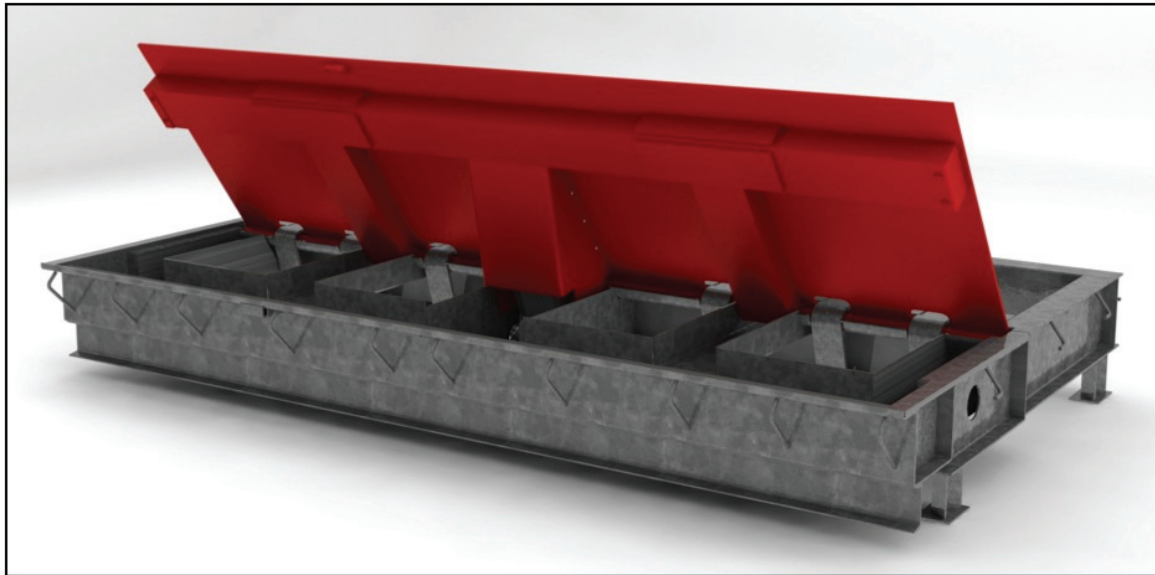


NMSB III-D Steel Plate / Wedge Barrier



The Nasatka Steel Plate Wedge Barriers are the most proven, tested and reliable vehicle access control barrier systems in the world. From military bases and embassies to data centers and government agencies, the Nasatka Steel Plate Wedge Barrier System has become a signature standard when protecting global assets.

Nasatka's Steel Plate Wedge Barriers feature hot-dip steel construction, providing a one-of-a-kind vehicle barrier system with long lasting durability and protection. The NMSB III-D steel plate wedge barrier family offers the perfect combination of engineering achievement and maximum durability in order to operate in harsh environments for a powerful security solution.



Features:

- ✓ Shallow mount 16" foundation
- ✓ Standard barrier deployment is 3-5 seconds, EFO in 1 second
- ✓ Plug-and-play systems (only require power and control wire to operate)
- ✓ Electric model independent cycle tested for 1.4 million cycles with no failure
- ✓ Extreme cold weather package available (hydraulic operator)

Benefits:

- ✓ All hydraulic lines or electrical components are internally contained
- ✓ All housings meet NEMA outdoor standards
- ✓ Designed to operate with loss of external power
- ✓ Accumulator (hydraulic operator) 3 spare cycles
- ✓ UPS/battery backup (electric operator)
- ✓ Easily interfaced with access control systems
- ✓ Hot-dip galvanized steel construction provides excellent ROI

| | |
|--------------------------------|---|
| Crash Rating: | DOS K12/L3 (15,000 lbs. at 50 mph) ASTM F2656-07 M50 P1 for 8' clear opening |
| Barrier Plate Material: | U.S. ASTM, A514 Type-B (T-1), Yield Strength: 100 KSI |
| Barrier Weight: | 5,000 lbs. for 10' Clear Opening |
| Power Requirements: | Barrier – 208, 230 or 480 VAC, 3 Phase, 50/60 Hertz, Master Control Panel - 24VDC |
| Cycle Time: | Standard barrier deployment is 3-5 seconds, EFO in 1 second |
| Operators: | Electric operator with integrated electric power unit (EPU) Hydraulic operator with remote electro-hydraulic power unit (HPU) |
| Barrier Finish: | All steel components of the barrier are hot dip galvanized. Standard impact side has a reflective red or white "STOP" decal, while the vehicle passage side features an anti-skid coating. Custom finishes such as chevrons, "STOP" in other languages are available. |
| Operating Modes: | <p>Normal: Barrier opens and closes at normal speeds. Operation is controlled hydraulically and commands are received via operator input or automation sequence initiation.</p> <p>Emergency: Barrier closes to secure position. Operation is controlled hydraulically and commands are received via operator input.</p> <p>Manual: Open and close barrier via manual release of accumulator charge or manual hand pump.</p> |
| System Controller: | Uses a secure, standards-based end-to-end architecture utilizing a real time active vehicle barrier microprocessor to control all input and output, data logging, device enrollment and validation. |
| Control Panel: | Standard push button controls with multiple modes of operation. Standard menu uses a 5.7" color touchscreen. Customized user interface with optional background site map running on 8", 10", 12", or 17" touchscreens. |
| Foundation: | 10' Opening – Length 12', Width 10', Depth 16", 4000psi concrete 12' Opening – Length 14', Width 10', Depth 16", 4000psi concrete |