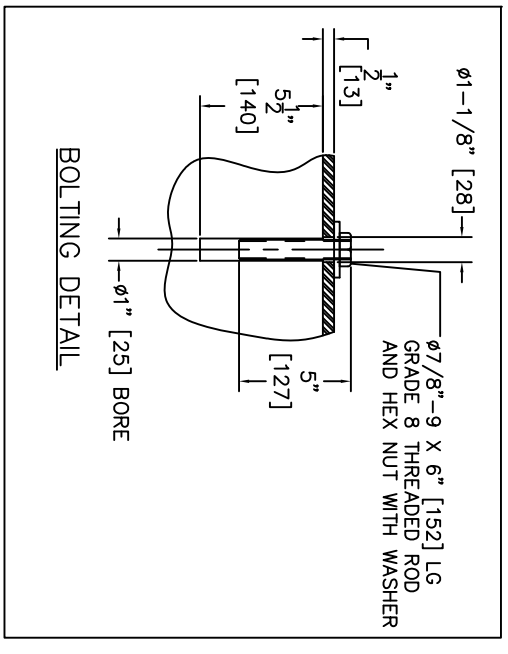
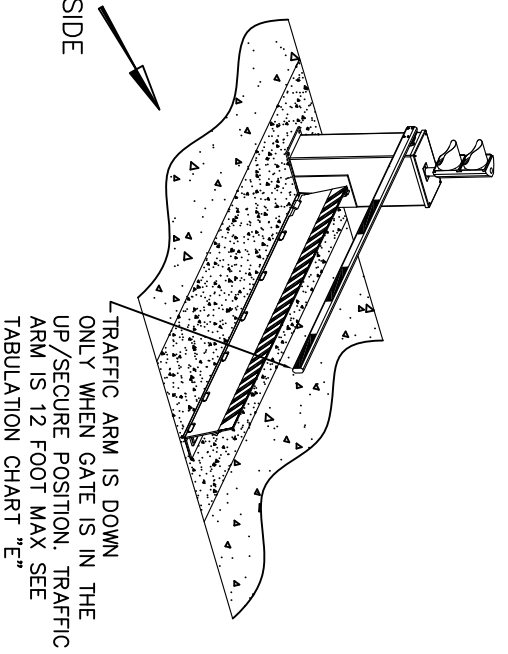
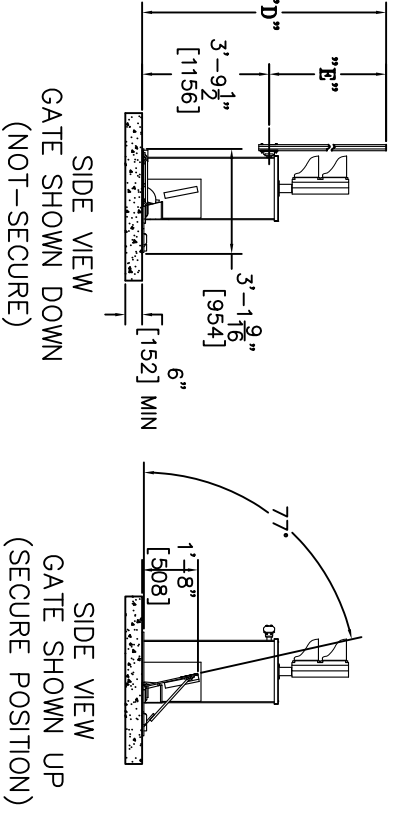
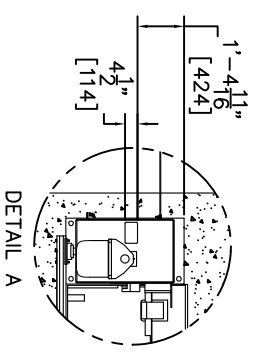
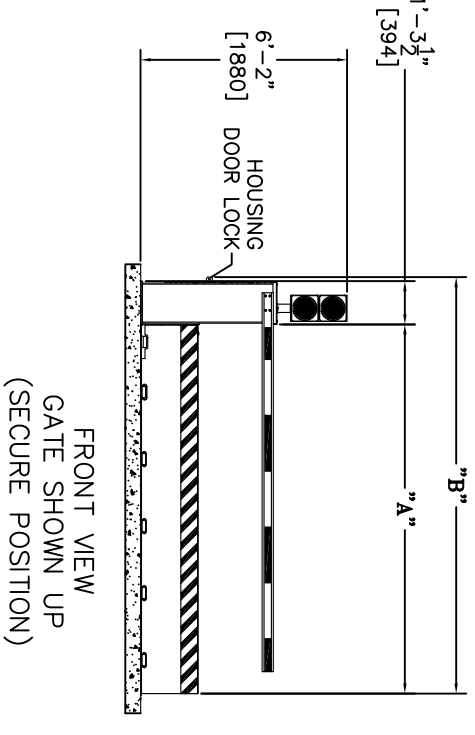
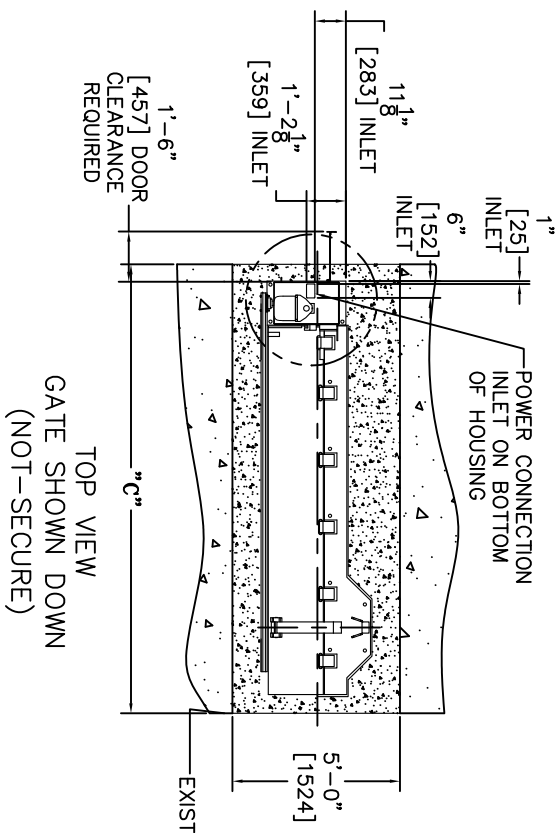


"A" GATE WIDTH	"B" (mm)	"C" (mm)	"D" (mm)	"E" (mm)	MINIMUM # BOLTS REQ'D	APPROXIMATE BARRIER WEIGHT
8' (3,438m)	113" (2875)	132" (3353)	178" (4509)	108" (2743)	11	590 kg
9' (2,743m)	125" (3180)	144" (3658)	190" (4814)	120" (3048)	11	658 kg
10' (3,048m)	137" (3485)	156" (3962)	202" (5119)	132" (3353)	11	726 kg
11' (3,353m)	149" (3790)	168" (4267)	214" (5424)	144" (3658)	11	794 kg
12' (3,658m)	161" (4095)	180" (4572)	226" (5727)	156" (3962)	12	862 kg
13' (3,962m)	173" (4400)	192" (4877)	238" (6032)	168" (4267)	12	930 kg
14' (4,267m)	185" (4705)	204" (5182)	250" (6337)	180" (4572)	13	998 kg



- INSTALLATION PROCEDURE**
1. PLACE BARRIER IN DESIRED LOCATION
 2. CONTRACTOR SHALL BE RESPONSIBLE FOR ALL DIMENSION AND CONDITIONS OF THE BARRIER FOUNDATION
 3. DRILL CONCRETE WITH ø1" BORE USING THE BARRIER BASEPLATE HOLES AS A TEMPLATE
 4. DRILL TO THE PROPER DEPTH (SEE BOLTING DETAIL)
 5. AFTER DRILLING, FLUSH HOLE WITH WATER TO CAPTURE DEBRIS
 6. VACUUM WATER FROM HOLE COMPLETELY
 7. ALLOW HOLES TO COMPLETELY DRY FOR 24 HOURS
 8. POUR EPOXY INTO HOLE BEFORE INSERTING BOLTS
 9. ALLOW EPOXY TO SET FOR 48 HOURS BEFORE COMMISSIONING USE OF THE BARRIER.

NOTE:
VALUES IN BRACKETS
ARE MILLIMETERS
RIGHT HAND UNIT SHOWN

DESCRIPTION: NMSB XI RH BARRIER LAYOUT	REV.	DATE	DESCRIPTION	THIS DOCUMENT CONTAINS INFORMATION DEEMED CONFIDENTIAL AND PROPRIETARY TO NASATKA BARRIER, INC. AND MAY NOT BE REPRODUCED IN WHOLE OR IN PART WITHOUT THE EXPRESS WRITTEN PERMISSION OF NASATKA BARRIER, INC. FURTHER, NO USE OF THIS DOCUMENT OR THE INFORMATION CONTAINED HEREIN MAY BE MADE WITHOUT FIRST SECURING THE PRIOR WRITTEN APPROVAL OF NASATKA BARRIER, INC.
			ORIGINAL RELEASE	
PART NO. #####	DRAWN BY: EMS	CHK BY:		
Scale: NTS	SCALE: NTS	DATE: 8/15/2013		

